

Report No.:

Test Time: 25.08.2020 23:46

Luminaire Property

Luminaire Manufacturer:

Luminaire Description: FD 112 150W 5000K 60 gr. prozrachnoe steclo DALI

Luminous Length (mm): 316

Luminous Width (mm): 316

Luminous Height (mm): 132

Voltage: 221.6 V

Current: 0.697 A

Power: 152.66 W

Power Factor: 0.987

Photometric Results

CIE Class: Direct

Measurement Flux: 21212.9 lm

Total Rated Lamp Lumens: 21212.9 lm

Efficiency: 100%

Downward Ratio: 100%

Upward Ratio: 0%

Field Angle(C0/C180,C90/C270,C45/C225,C135/315): 99.0, 102.0, 99.8, 99.8

Beam Angle(C0/C180,C90/C270,C45/C225,C135/315): 62.3, 63.5, 63.1, 63.1

Luminaire Efficacy Rating (LER): 139.01

Central Intensity: 18702.37 cd

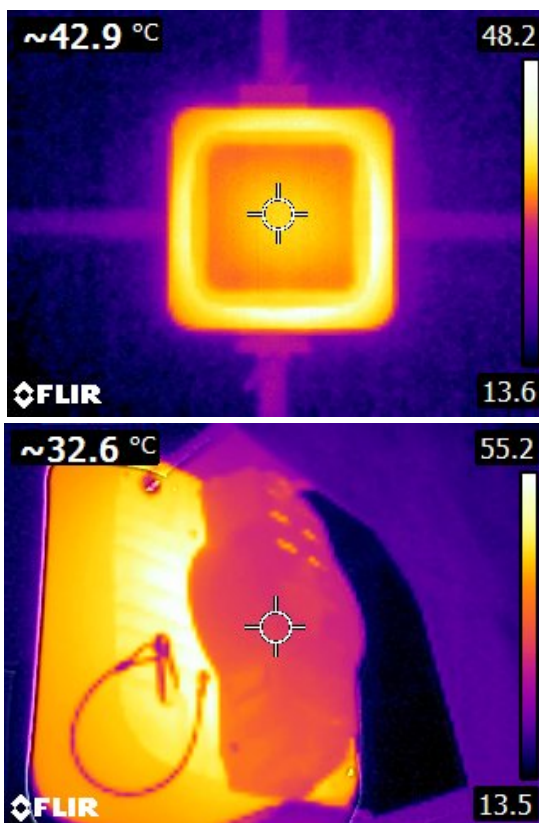
Max. Intensity: 18818.79 cd

Pos of Max. Intensity: H112.5 V0

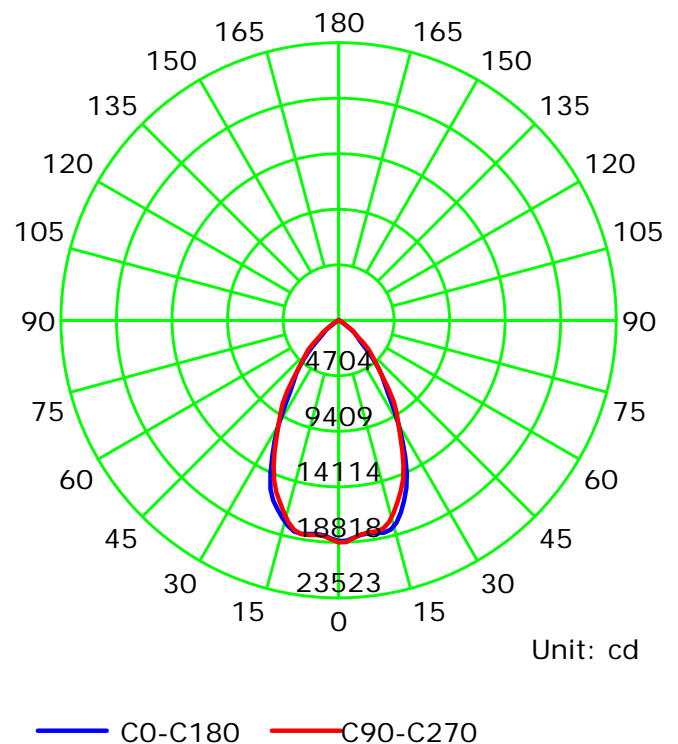
S/MH(C0/C180): 0.98

S/MH(C90/C270): 0.95

Termogramma



Luminous Intensity Distribution Curve



C Plane (°):0.0-360.0: 22.5

Test Lab:

Test Type: TYPE C

Temperature:

Operator:

Gamma Plane (°):0.0-180.0:2.0

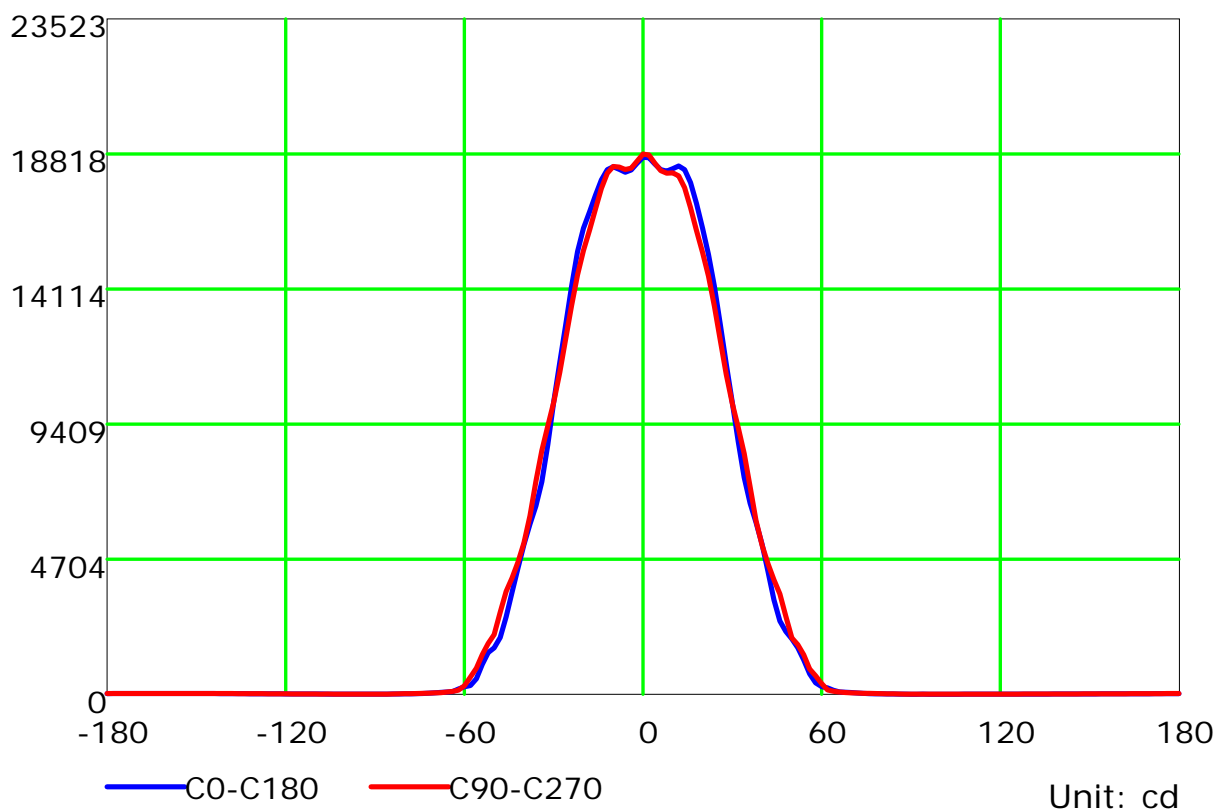
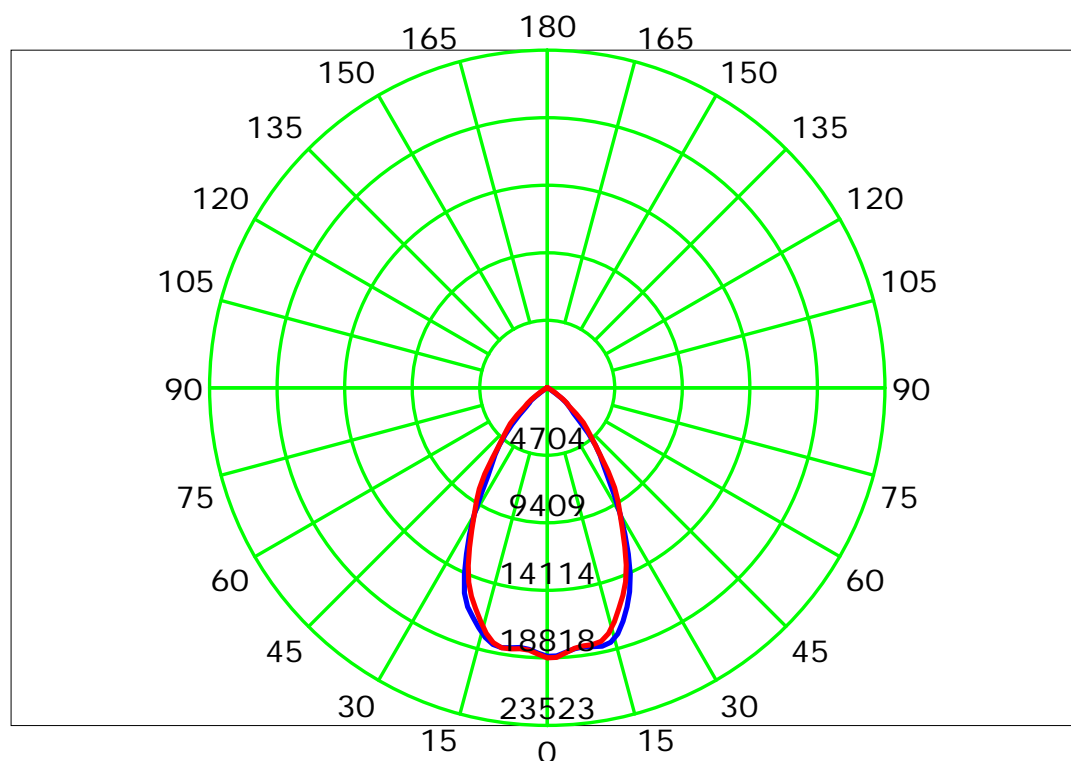
Test Device: LSG-1800B

Distance: 12.677 m

Humidity:

Inspector:

Luminous Intensity Distribution Curve



C Plane (°): 0.0-360.0: 22.5

Test Lab:

Test Type: TYPE C

Temperature:

Operator:

Gamma Plane (°): 0.0-180.0: 2.0

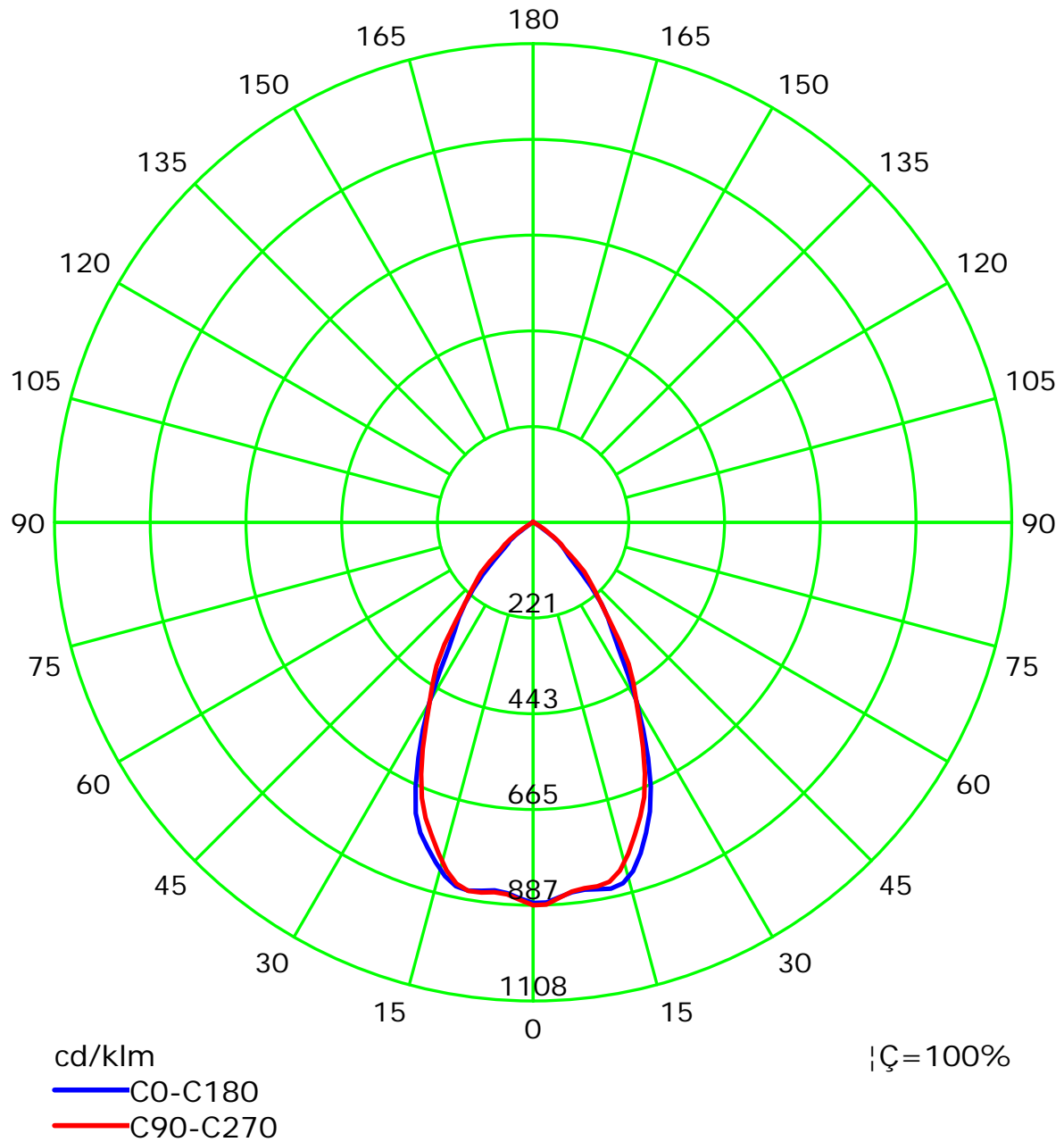
Test Device: LSG-1800B

Distance: 12.677 m

Humidity:

Inspector:

Luminous Intensity Distribution Curve(cd/klm)



C Plane (°): 0.0-360.0: 22.5

Test Lab:

Test Type: TYPE C

Temperature:

Operator:

Gamma Plane (°): 0.0-180.0: 2.0

Test Device: LSG-1800B

Distance: 12.677 m

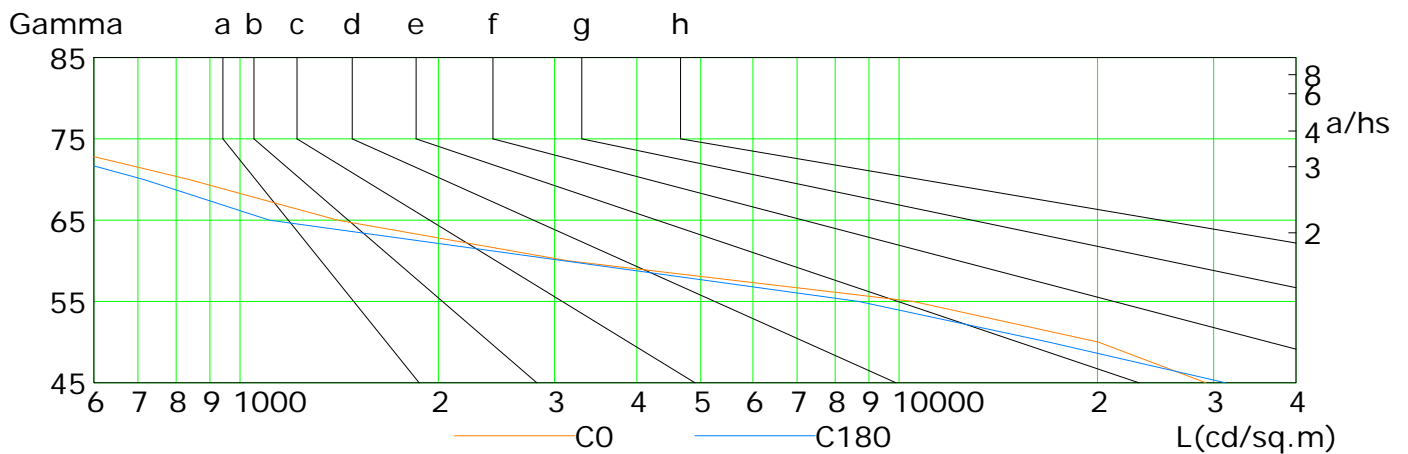
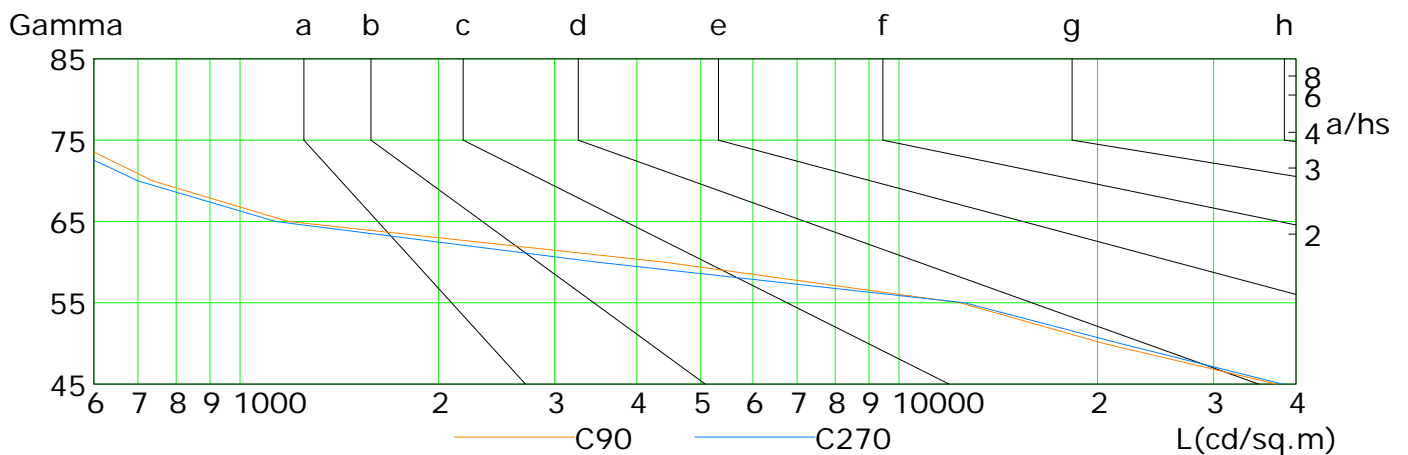
Humidity:

Inspector:

Lum Limit Curve

Dazzle	Quality	Illuminance (lx)							
1.15	A	2000	1000	500	<=300				
1.50	B		2000	1000	500	<=300			
1.85	C			2000	1000	500	<=300		
2.20	D				2000	1000	500	<=300	
2.55	E					2000	1000	500	<=300

a b c d e f g h



L(cd/sq.m)	G45	G50	G55	G60	G65	G70	G75	G80	G85
C0	29201	20063	10506	3147	1406	837	464	297	205
C90	37378	20434	12369	4400	1184	736	551	455	300
C180	31263	16869	8684	3102	1108	714	424	304	204
C270	38159	21629	12566	3478	1132	699	518	397	240

C Plane (°):0.0-360.0: 22.5

Test Lab:

Test Type: TYPE C

Temperature:

Operator:

Gamma Plane (°):0.0-180.0:2.0

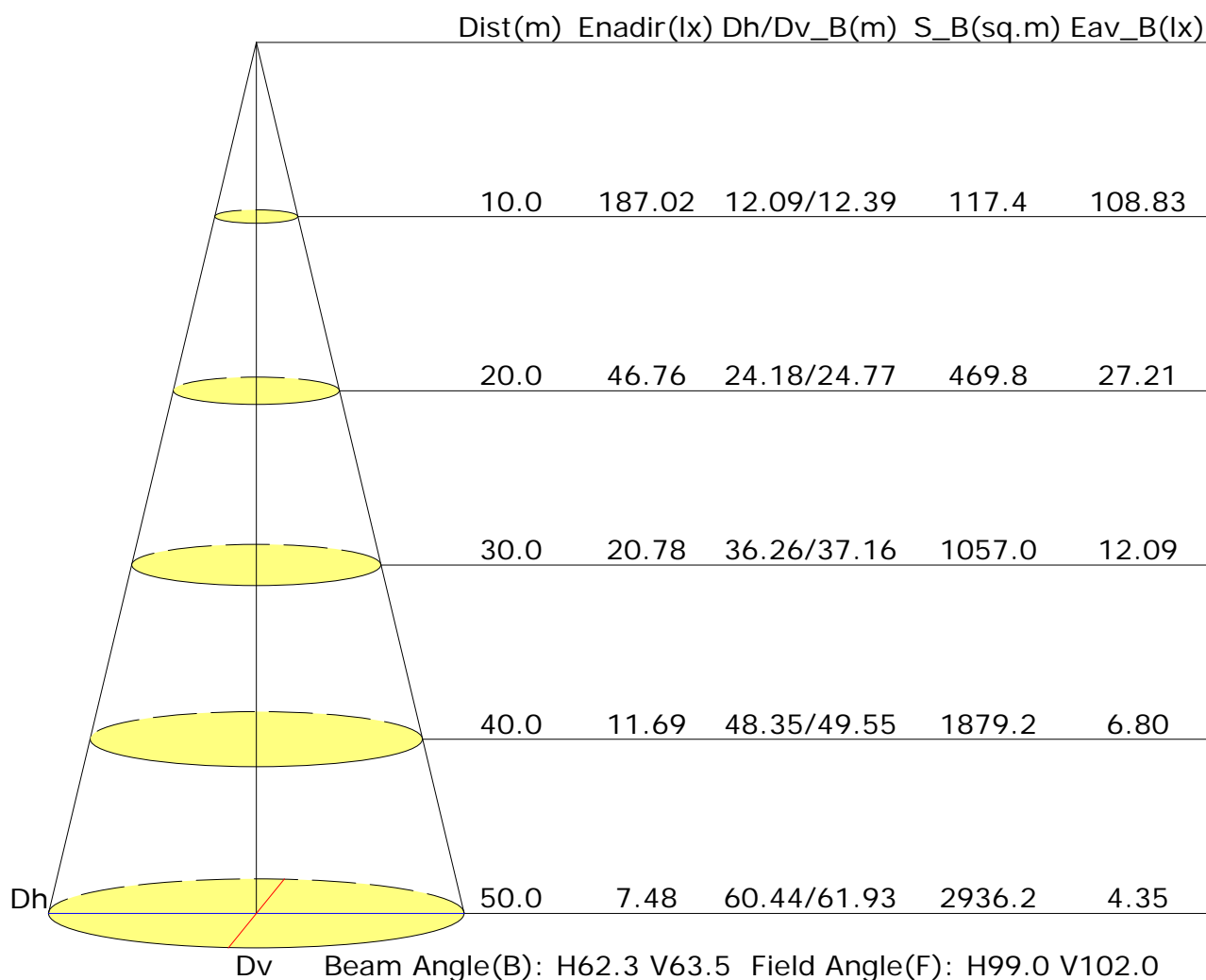
Test Device: LSG-1800B

Distance: 12.677 m

Humidity:

Inspector:

Illuminance at a Distance



UGR Table

Reflectance:										
Ceiling (cavity)	0.7	0.7	0.5	0.5	0.3	0.7	0.7	0.5	0.5	0.3
Wall	0.5	0.3	0.5	0.3	0.3	0.5	0.3	0.5	0.3	0.3
Reference plane	0.2	0.2	0.2	0.2	0.2	0.2	0.2	0.2	0.2	0.2
Room dimensions	Viewed crosswise					Viewed endwise				
X=2H Y=2H	20.1	21.1	20.4	21.3	21.5	20.5	21.4	20.7	21.6	21.9
3H	20.0	20.8	20.3	21.1	21.3	20.3	21.2	20.6	21.4	21.7
4H	19.9	20.7	20.2	21.0	21.2	20.2	21.0	20.6	21.3	21.6
6H	19.8	20.6	20.2	20.8	21.2	20.2	20.9	20.5	21.2	21.5
8H	19.8	20.5	20.1	20.8	21.1	20.1	20.8	20.5	21.1	21.5
12H	19.7	20.4	20.1	20.7	21.1	20.1	20.8	20.5	21.1	21.4
X=4H Y=2H	19.9	20.7	20.3	21.0	21.3	20.3	21.1	20.6	21.4	21.6
3H	19.8	20.5	20.2	20.8	21.1	20.1	20.8	20.5	21.1	21.5
4H	19.7	20.3	20.1	20.7	21.0	20.1	20.7	20.4	21.0	21.4
6H	19.6	20.2	20.1	20.5	20.9	20.0	20.5	20.4	20.9	21.3
8H	19.6	20.1	20.0	20.5	20.9	19.9	20.4	20.4	20.8	21.2
12H	19.6	20.0	20.0	20.4	20.8	19.9	20.3	20.3	20.7	21.2
X=8H Y=4H	19.6	20.1	20.0	20.5	20.9	19.9	20.4	20.4	20.8	21.2
6H	19.5	19.9	20.0	20.3	20.8	19.9	20.2	20.3	20.7	21.1
8H	19.5	19.8	20.0	20.3	20.8	19.8	20.2	20.3	20.6	21.1
12H	19.4	19.7	19.9	20.2	20.7	19.8	20.1	20.3	20.5	21.1
X=12H Y=4H	19.5	20.0	20.0	20.4	20.8	19.9	20.3	20.3	20.7	21.2
6H	19.5	19.8	20.0	20.3	20.8	19.8	20.2	20.3	20.6	21.1
8H	19.4	19.7	19.9	20.2	20.7	19.8	20.1	20.3	20.5	21.0
Variations with the observer position at spacings:										
S=1.0H	+2.5/-6.3					+2.3/-5.0				
S=1.5H	+5.0/-13.6					+4.7/-14.1				
S=2.0H	+6.9/-15.9					+6.7/-16.7				

Calculate in accordance with CIE Pub.117. The table is revised with 21213Im ($8\log(F/F_0) = 10.6$).

Utilisation Factor Table(Floor cavity)

Utilisation Factors UF(F)			SHR NOM = 0.75									
Room Reflectance			Room Index(RI)									
Ceiling	Wall	Floor	0.75	1.00	1.25	1.50	2.00	2.50	3.00	4.00	5.00	
0.70	0.50	0.20	0.76	0.84	0.90	0.94	0.99	1.02	1.05	1.07	1.09	
	0.30		0.70	0.79	0.85	0.89	0.95	0.99	1.01	1.05	1.07	
	0.20		0.66	0.75	0.81	0.86	0.92	0.96	0.99	1.03	1.05	
0.50	0.50	0.20	0.74	0.83	0.88	0.91	0.96	0.99	1.01	1.03	1.05	
	0.30		0.69	0.78	0.84	0.88	0.93	0.96	0.98	1.01	1.03	
	0.20		0.66	0.75	0.80	0.84	0.90	0.94	0.96	1.00	1.02	
0.30	0.50	0.20	0.73	0.81	0.86	0.89	0.93	0.96	0.98	1.00	1.01	
	0.30		0.69	0.77	0.82	0.86	0.91	0.94	0.96	0.98	1.00	
	0.20		0.65	0.74	0.79	0.83	0.88	0.92	0.94	0.97	0.99	
0.00	0.00	0.00	0.64	0.72	0.77	0.80	0.85	0.88	0.90	0.92	0.94	
Rating: 153W Photometrically tested without ceiling board. Multiply UF values by service correction factors Calculate in accordance with CIBSE Technical Memorandum NO.5 1980												

Utilisation Factor Table(Wall)

Utilisation Factors UF(W)			SHR NOM = 0.75									
Room Reflectance			Room Index(RI)									
Ceiling	Wall	Floor	0.75	1.00	1.25	1.50	2.00	2.50	3.00	4.00	5.00	
0.70	0.50	0.20	0.71	0.56	0.47	0.40	0.31	0.26	0.22	0.17	0.13	
	0.30		0.59	0.48	0.41	0.35	0.28	0.23	0.20	0.16	0.13	
	0.20		0.51	0.42	0.36	0.32	0.26	0.22	0.19	0.15	0.12	
0.50	0.50	0.20	0.68	0.54	0.44	0.38	0.29	0.28	0.20	0.15	0.12	
	0.30		0.57	0.46	0.39	0.34	0.27	0.22	0.19	0.15	0.12	
	0.20		0.50	0.41	0.35	0.31	0.25	0.21	0.18	0.14	0.11	
0.30	0.50	0.20	0.65	0.51	0.42	0.36	0.27	0.22	0.19	0.14	0.12	
	0.30		0.56	0.45	0.38	0.32	0.25	0.21	0.18	0.14	0.11	
	0.20		0.49	0.40	0.34	0.29	0.23	0.19	0.17	0.13	0.11	
0.00	0.00	0.00	0.36	0.28	0.23	0.20	0.15	0.12	0.10	0.08	0.06	
<p>Rating: 153W Photometrically tested without ceiling board.</p> <p>Multiply UF values by service correction factors</p> <p>Calculate in accordance with CIBSE Technical Memorandum NO.5 1980</p>												

Utilisation Factor Table(Ceiling cavity)

Utilisation Factors UF(C)			SHR NOM = 0.75								
Room Reflectance			Room Index(RI)								
Ceiling	Wall	Floor	0.75	1.00	1.25	1.50	2.00	2.50	3.00	4.00	5.00
0.70	0.50	0.20	0.14	0.16	0.17	0.18	0.19	0.19	0.20	0.21	0.21
	0.30		0.09	0.11	0.13	0.14	0.16	0.17	0.18	0.19	0.20
	0.20		0.06	0.08	0.10	0.11	0.13	0.15	0.16	0.17	0.18
0.50	0.50	0.20	0.14	0.15	0.16	0.17	0.18	0.19	0.19	0.20	0.20
	0.30		0.09	0.11	0.12	0.14	0.15	0.16	0.17	0.18	0.19
	0.20		0.06	0.08	0.09	0.11	0.13	0.14	0.15	0.17	0.18
0.30	0.50	0.20	0.13	0.15	0.16	0.16	0.17	0.18	0.19	0.19	0.20
	0.30		0.09	0.11	0.12	0.13	0.15	0.16	0.17	0.18	0.18
	0.20		0.06	0.08	0.09	0.11	0.12	0.14	0.15	0.16	0.17
0.00	0.00	0.00	0.00	0.00	0.00	0.00	0.00	0.00	0.00	0.00	0.00
Rating: 153W Photometrically tested without ceiling board. Multiply UF values by service correction factors Calculate in accordance with CIBSE Technical Memorandum NO.5 1980											